

Your invitation to attend the 43rd annual

# Power Control and Protection Conference

Presented by  **Basler Electric**

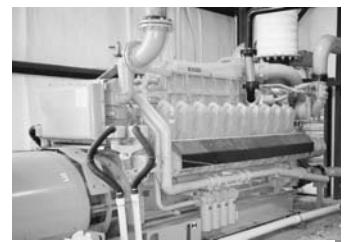
Featuring classroom training and product demonstrations  
on Electrical Generating Power Systems

Topics include:

- ⇒ Voltage regulation
- ⇒ Excitation systems
- ⇒ Protective relaying
- ⇒ Automatic synchronization
- ⇒ Generator/Genset controls
- ⇒ Power System stabilization

Featured products:

- ⇒ DGC-2020 Digital Genset Controller with available Load Share Module
- ⇒ BE1 Numeric Relay Systems with BESTCOMSPlus
- ⇒ Large Excitation Control Systems (DECS-400 and ECS2100)



- ⇒ Early bird tuition discount deadline is August 18, 2008
- ⇒ Curriculum revised and updated annually
- ⇒ Visit [www.basler.com](http://www.basler.com) to register on-line

**Sept. 29-  
Oct. 2, 2008**



**Fairview Heights,  
Illinois**  
(near St. Louis MO)

# Abbreviated Agenda

## **Introduction to Electric Power Systems**

- Generator basics
- Closed loop control systems

## **Generator Control**

- Voltage Regulation
  - Selection and application
  - Generator stability
  - Designing a voltage regulator / excitation system (prime and standby power)
  - Voltage regulator & parallel operation
- Static Excitation
  - Large Excitation Systems and bridge paralleling with Basler Excitation Systems
  - Multiple bridge paralleling for higher excitation current capabilities
  - Negative forcing
  - Retrofitting rotary exciters with digital excitation systems
  - Static excitation application and protection
  - NERC testing requirements
  - Synchronous motor control
  - Tuning a PID Controller
- Power system stability
- Introduction to synchronizing

## **Protective Relaying**

- The basics
- Transformer protection
- Generator protection
- Intertie protection

## **Genset Engine Control and Protection**

- SAE J1939 CANBUS for direct ECU communications
- Generator/Engine Metering
- Load Sharing
- Automatic Transfer Control
- Remote Communications
- NFPA requirements

## **Distributed Generation**

- Introduction to distributed generation
- Paralleled operation with networks
- Protection of distributed generation
- Review of IEEE Std. 1547-2003 for Distributed Generation

## **Product Demonstrations and Tour**

- Engine/generator control and protection
- Digital excitation for large machines
- Synchronizing and PID tuning
- Generator and intertie protection systems
- Power system stability/Negative forcing AVR
- Basler Electric factory tour

## **Ready to register?**

Complete the form on the back of this invitation and fax to 618/654-2351, or register on-line at [www.basler.com](http://www.basler.com) by August 18, 2008. Include your credit card information. Or mail with check (payable to Basler Electric) to Basler Electric Company, Carol Ingram/PCPC, Route 143, Box 269, Highland IL 62249. A confirmation will be sent to you via e-mail or fax.

## **Questions about technical issues or seminar content?**

Contact Terry Gaines, Training Manager, phone 618/654-2341, ext. 773, or fax 618/654-2351; e-mail: [terrygaines@basler.com](mailto:terrygaines@basler.com).

# Conference Details

## Why should I attend?

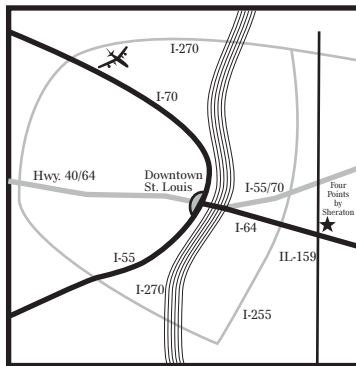
This conference is unique because it provides both a good overview and an in-depth look at specific aspects of controlling and protecting electrical generating power systems. Applications range from a simple genset, to larger generators, to complex systems with multiple generators running in parallel. Although this is Basler Electric's 43rd Annual Power Control and Protection Conference, the presentations and demos are updated each year, as new technologies emerge. The topics are intended to address critical issues facing the electrical industry today. While this conference does not specifically cover the troubleshooting of systems or their components, it is designed to increase your knowledge and understanding of power generation systems.

Please confirm your attendance as soon as possible, because attendance is limited in order to provide the best possible interaction among instructors and attendees. Enrollment is based upon **receipt of payment** on a first-come, first-served basis.

## Lodging

**Four Points by Sheraton**  
**319 Fountains Pkwy**  
**Fairview Heights Illinois**  
**62208**

26 miles (approx. 35 minutes) from St. Louis' Lambert International Airport and 10 minutes from downtown St. Louis, the Four Points by Sheraton is located just off Interstate 64 (Exit 12) and IL Route 159, near a major shopping mall and close to The Gateway Arch, Casino Queen Riverboat Gaming, and other attractions. Guests can enjoy free parking, indoor pool, hot tub, exercise room, and high speed Internet access.



A room block (at the rate of \$88.00 plus tax, single or double) has been reserved for our students. Your reservation will be made on your behalf by Basler Electric, but charges incurred at the Four Points are your responsibility. It is **not** necessary to contact the hotel to make or confirm sleeping room arrangements. We suggest that you check in on Sunday, Sept. 28, 2008.

**Inquire about a tuition discount  
for 3 or more students  
registered from one company!**

## Expenses

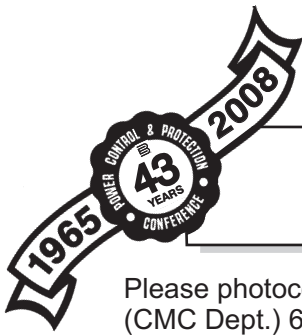
The tuition fee includes printed and electronic course reference material. Continental breakfast and lunch each day and the Monday evening icebreaker reception also are included. You are responsible for all other expenses such as travel, lodging (although we will make your hotel reservations for you based on the dates you indicate on your Registration Form) and dinners throughout the week.

## Enrollment

Register on-line at [www.basler.com](http://www.basler.com) or fax or mail your completed Registration Fax Back Form(s) to Basler Electric. **Due to limited seating, enrollment is based on receipt of payment.** The tuition for the 4-day conference is \$1,500.00, payable by check, MasterCard, VISA, or American Express. Please make checks payable to Basler Electric. *Or take advantage of the Early Bird tuition rate of \$1,350.00 if your credit card payment is made or your check is received on or before August 18.*

Upon receipt of payment, an enrollment acknowledgment will be sent to you via e-mail or fax. All cancellations received on or before September 15, 2008, will be subject to a \$100.00 processing fee. Cancellations received after this date will create a credit of the tuition, less processing fee, good toward any other Basler Electric conference or school for one year.

Complete driving directions will be included in your registration confirmation.



# Fax Back Registration Form

Today's Date \_\_\_\_\_

## Power Control and Protection Conference September 29-October 2, 2008 – \$1,500.00

Please photocopy completed form and fax to: Carol Ingram, Corporate Marketing Communications (CMC Dept.) 618 654-2351 (Phone: 618 654-2341 extension 122) e-mail: info@basler.com

From: \_\_\_\_\_ Phone: \_\_\_\_\_ FAX: \_\_\_\_\_

Registrant Information

Name and Title: \_\_\_\_\_

Name to appear on attendance badge: \_\_\_\_\_

Company: \_\_\_\_\_

Mailing Address: \_\_\_\_\_

City: \_\_\_\_\_ State: \_\_\_\_ Country: \_\_\_\_\_ Zip/Postal Code: \_\_\_\_\_

Daytime Phone: (\_\_\_\_) \_\_\_\_\_ Fax: (\_\_\_\_) \_\_\_\_\_

E-mail address: \_\_\_\_\_

Hotel Room Request

Basler Electric will make your reservation. You are responsible for payment.

Arrival Date: \_\_\_\_\_

Departure Date: \_\_\_\_\_

Single  Double  Non-smoking

If you plan to stay over until Friday, October 3, for your convenience, arrangements have been made for free transportation to the St. Louis Airport Hilton, where you will enjoy the same \$88.00 room rate.

If double, will you be sharing with another student? Yes  No

If yes, name: \_\_\_\_\_

Payment Information

Conference tuition is \$1,500.00 per attendee. You are not officially registered until Basler receives your check or until your credit card charge clears. Payment cannot be accepted upon arrival at this conference. Please review the cancellation policy on Page 3 ("Enrollment") of this flyer.

Credit Card:

VISA  MasterCard  American Express

Check:

Please make check for \$1,500.00 payable to Basler Electric Company.

Card Number: \_\_\_\_\_

Name on Card: \_\_\_\_\_

Expiration Date: \_\_\_\_\_

Cardholder's billing address, if different from above:  
\_\_\_\_\_  
\_\_\_\_\_

**Sign up early and pay just \$1350!  
Register and complete  
payment to Basler Electric by  
credit card or check on or before  
Monday, August 18, 2008!**

Mail to: Basler Electric Company, Attn: Carol Ingram/PCPC, Box 269, Highland, IL 62249



Route 143 Box 269 Highland Illinois  
Phone: 618 654-2341 Fax: 618 654-2351  
Web site: <http://www.basler.com> e-mail: info@basler.com

