

OPTIONS

Drive Arm/Adapter Clevis/Driven Arm

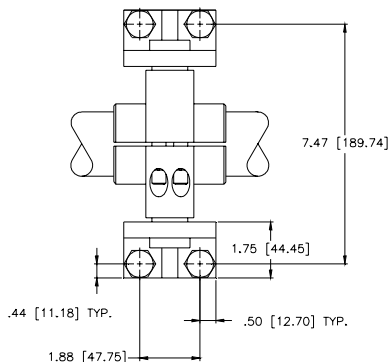
- D016** Fixed (15") drive arm for splined shaft of SM-5400. Pinhole diameter of 1.0 in. and thickness of 1.50 in. See drawing for D001.
- D017** Adapter clevis kit used with D016 and D018 for splined shaft of SM-5400. Female clevis ends with a pinhole diameter of 1.0 in. and width of 1.50 in. See drawing for D003.
- D018** Driven arm used with D016 and D017. 1.50 in. width driven arm with 1.0 in. diameter pin holes at 15, 18.38 and 25.5. End bored to 0.25 pilot for damper shaft. See drawing for D005.
- D019** Hagan Bailey Pneumatic Replacement (Pedestal Drive Arm) for SM-1700. Retrofit pedestal and drive arm to match Hagan and Bailey pneumatic drives up to 200 ft. lbs. of torque. Allows use of existing linkage and mounting. See D022 photo.
- D020** Hagan Bailey Pneumatic Replacement (Pedestal Drive Arm) for SM-5100. Same as D019, but up to 300 ft. lbs. of torque. See D022 photo.
- D021** Hagan and Bailey Pneumatic Replacement (Pedestal Drive Arm) for SM-5200. Same as D019, but up to 1,000 ft. lbs. of torque. See D022 photo.
- D022** Hagan and Bailey Pneumatic Replacement (Pedestal Drive Arm) for SM-5300. Same as D019, but up to 3,200 ft. lbs. of torque.



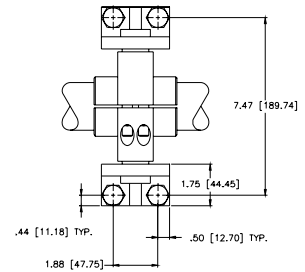
- D023** Hagan and Bailey Pneumatic Replacement (Pedestal Drive Arm) for SM-5400. Same as D019, but up to 12,500 ft. lbs. of torque. See photo for D022.
- D024** Wedglock Coupling for the SM-1700. Three piece coupling that allows adjustment of actuator and valve/damper without removal of either from the mounting bracket.



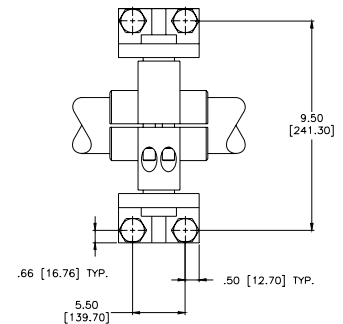
- D025** Wedglock Coupling for SM-5100. See description and photo of D024.
- D026** Wedglock Coupling for SM-5200. See description and photo of D024.
- D027** Wedglock Coupling for SM-5300. See description and photo of D024.
- D028** Wedglock Coupling for SM-5400. See description and photo of D024.
- D029** PT-1300 Mounting Kit. Universal mounting kit for sliding stem valves.
- D030** Trunnion Mount for LA-2300. Allows actuator to be foot mounted. (Not available for 6 in. stroke).



- D031** Trunnion Mount for LA-2400. Allows actuator to be foot mounted. (Not available for 6 in. stroke).



- D032** Trunnion Mount for LA-2500. Allows actuator to be foot mounted. (Not available for 6 in. stroke).



- D033** Trunnion Mount for LA-2600. Allows actuator to be foot mounted. (Available up to 3,600 lbf)

